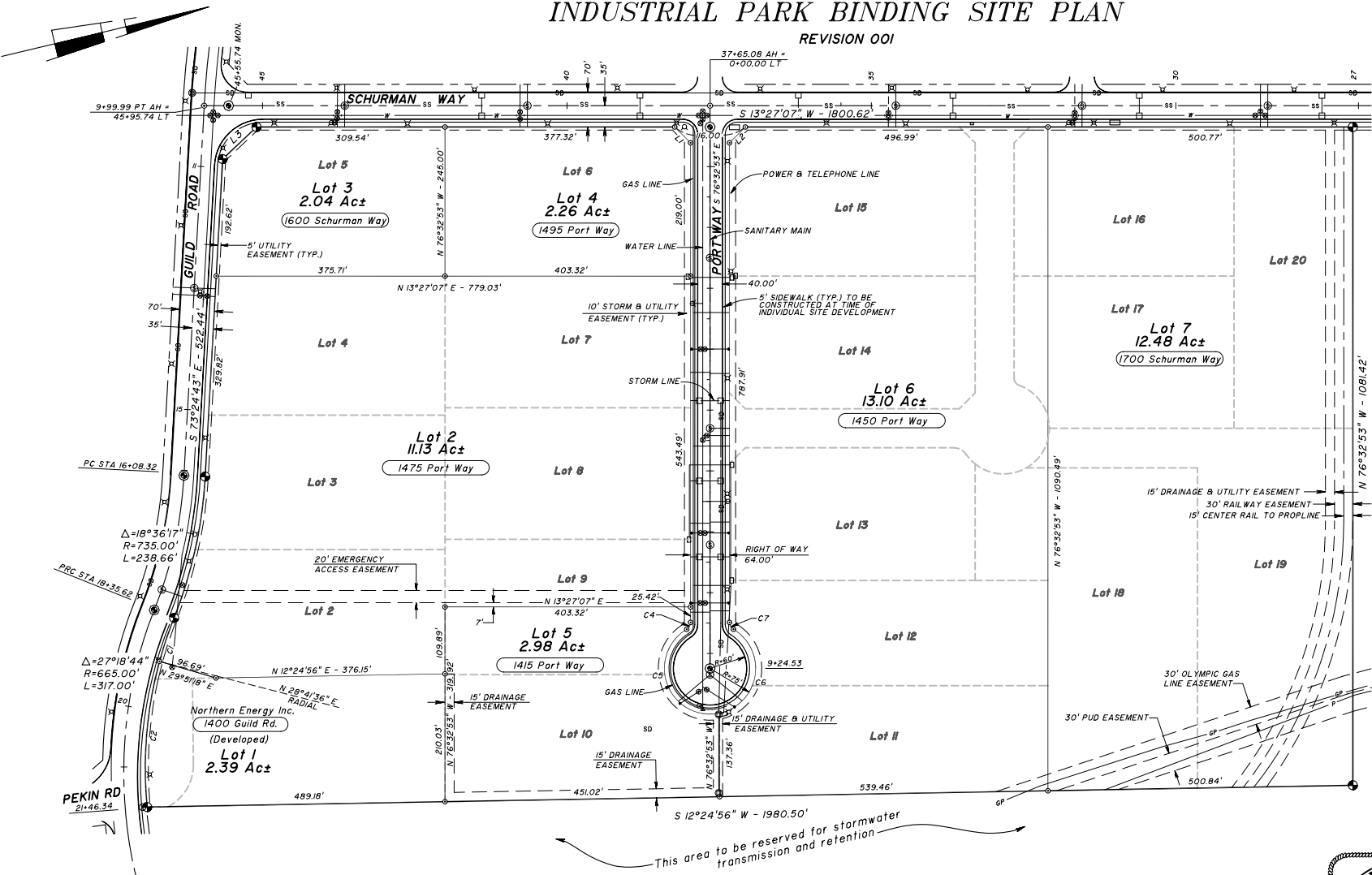


PORT OF WOODLAND INDUSTRIAL PARK BINDING SITE PLAN

REVISION 001



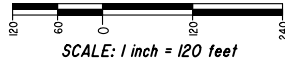
- LEGEND**
(existing)
- SS—SS— Sanitary sewer and manhole
 - SD—SD— Storm drain and manhole
 - Catch basin
 - ⊕ Street light
 - ⊕ Fire hydrant
 - W—W— Water line and valve
 - P—P— Power vault
 - GP— Buried petroleum line
 - P— Overhead power line
 - ⊕ Case mon. with El. stamp
 - ⊕ 5/8" x 30" rebar with cap

LINE TABLE

No.	Bearing	Length
L1	S 58°27'07" W	36.77'
L2	N 31°32'53" W	36.77'
L3	S 29°58'48" E	76.61'

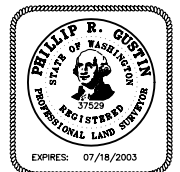
CURVE TABLE

No.	Delta	Radius	Length
C1	06°29'58"	665.00'	75.44'
C2	20°48'46"	665.00'	241.56'
C3	NO DATA		
C4	59°14'43"	13.00'	13.44'
C5	161°15'58"	75.00'	211.10'
C6	137°13'28"	75.00'	179.63'
C7	59°14'43"	13.00'	13.44'



Phillip R. Gustin PLS
Certificate no. 37,529

Date signed: _____



HAMPSTUR CORPORATION



P.O. Box 368
Kelso, Washington 98626
Phone: (360) 423-8166

Calculated by :	PRG
Checked by :	PRG/CJH
Drawn by :	L
Completion date :	7/31/02
Field Book no. :	
Drawing No. :	00508BSP2
HAMPSTUR JOB no. :	00-508
Sheet no. :	2 of 2