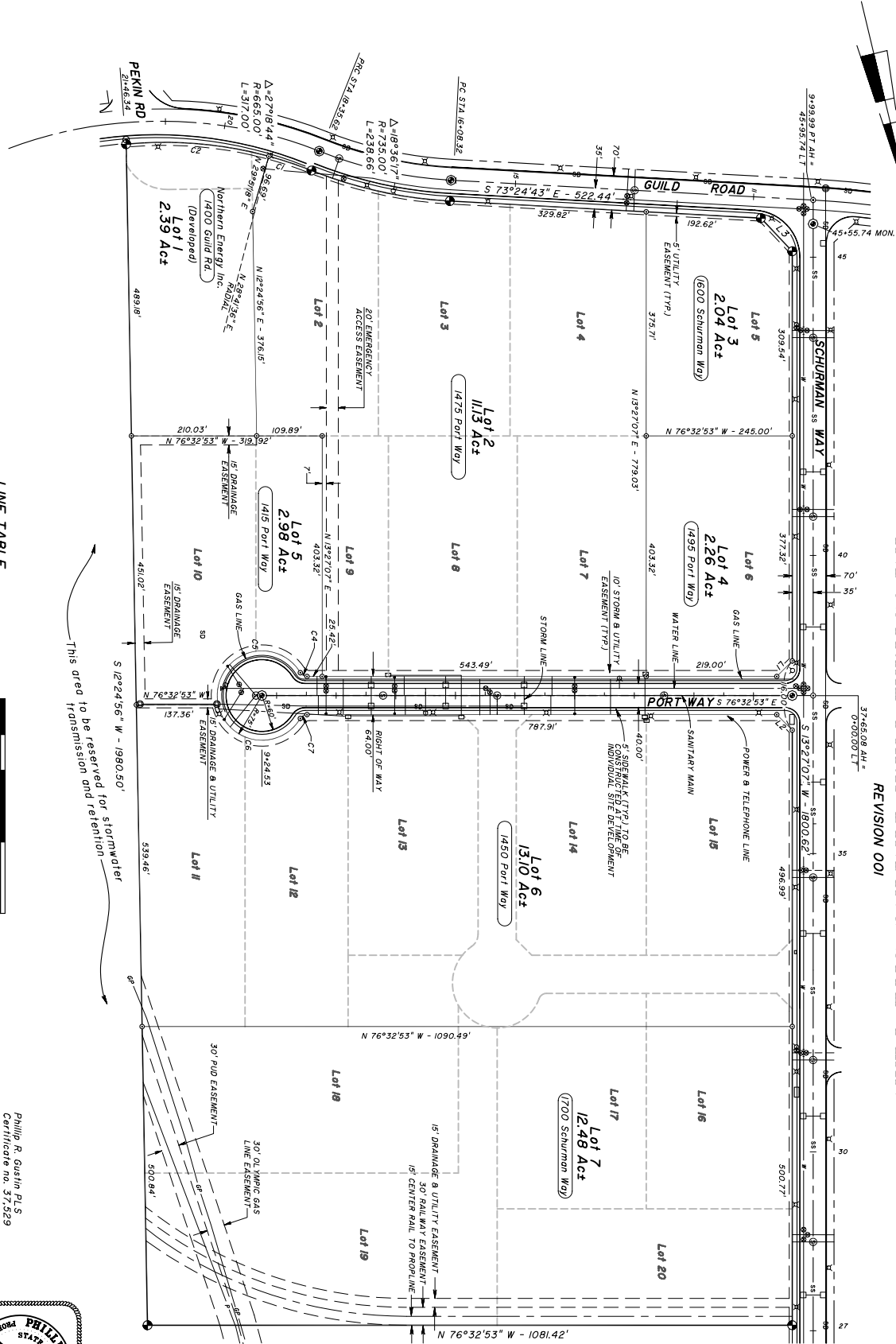


PART OF WOODLAND INDUSTRIAL PARK BINDING SITE PLAN

REVISION 001



LEGEND
(existing)

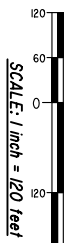
- S—S—S— Sanitary sewer and manhole
- SD—SD— Storm drain and manhole
- Catch basin
- Street light
- W— Fire hydrant
- P—P— Poter line and valve
- B—B— Buried petroleum line
- O—O— Overhead power line
- Case mon. with Et. stamp
- 5/8" x 30" rebar with cap

LINE TABLE

No.	Beginning	Length
L1	S 59°27'07" W 36.77'	
L2	N 31°32'55" W 36.77'	
L3	S 29°58'48" E 76.61'	

CURVE TABLE

No.	Delta	Radius	Length
C1	02°21'58"	682.00'	75.56'
C2	20°48'46"	NO DATA	241.56'
C3	59°14'43"	13.00'	13.44'
C4	161°15'58"	75.00'	211.10'
C5	137°13'28"	75.00'	179.63'
C6	59°14'43"	13.00'	13.44'



This area to be reserved for stormwater transmission and retention

HAMPSTUR CORPORATION

Phillip R. Gustin, PLS
 Certificate no. 37,529
 Date signed: _____



HAMPSTUR CORPORATION
 P.O. Box 358
 Kelso, Washington 98626
 Phone: (360) 423-9806

Calculated by:	PRG
Checked by:	PRG/CH
Drawn by:	L
Completion date:	7/31/02
Field Book no.:	
Drawing No.:	00508BSP2
HAMPSTUR JOB no.:	00-508
Sheet no.:	2 of 2